

-

XIII
3
2007
-



:

, . . ; (-
); . . ; , -
 . . (); , -
 . . ; . . (-
); . . ; . . ;
 . . ; . . ; -
 . . ; . .

:

. (); . . ();
 . . (); , ,
 (); , . . ();
 , . . (); ,
 . (); , . .
 (); . . ();
 , (); . .
 (); , . . ()

1706

77-7054

, ! “ 3.03.2002 . ”

1995
: 140001, , , , 200
(): 8(7182) 57-29-39
-mail: press@rncenter.kz



	:	I	-	7-11
			-	
			-	12-14
		«	»	15-16
				16-20
			:	21-34
«		()		34-40
-			()	
	-	„	„	
				40-41
	»			
				42-43
				44-45
T XIII				
3		(
2007)		45-48
		„	„	
		„	„	
4				
				48-52

. . .

,

-

-

- -

52-58

. . .

. . .

. . .

-

:

58-59

. . .

60-67

. . .

.

)

(

-

67-76

. . .

-

-

-

77-79

.

.

. . .

”

. . .

-

80-82

. . .

-

82-84

,

. . .

85-89

. . .

,

90-91

92-98

VOPROSY MENTAL'NOY MEDETSINY I ECOLOGII

TABLE OF CONTENTS

FOUNDERS:

EDITORIAL CLAUSES

Marov V. V.

I congress of Professional Psychotherapy League. The extended theses of the annual accounting report of the president to the congress of Professional Psychotherapy league.

7-11

PSYCHOTHERAPY

**Professional
Psychotherapeutic
League**

skvitin P. N.

Existential-humanistic factors of positive psychodrama

12-14

Chaplygina V. Y.

The «Subject» of the psychotherapy from the point of view of dianalysis

15-16

Cheglova I.

Personal brand. Archetypes of successfulness.

16-20

PSYCHIATRY

**RPSE
«Republican Research-
and-Practical Center
of Medical-Social Drug
Addiction Problems»**

shirbekov B.

Post schizophrenic depression: clinical-social aspect (review)

21-34

rasilnikov G.

About mental norm and pathology (clinical lecture)

34-40

Shihyslamova N., span . B., Lobodenko . G., Sadykova B.

The use of preparation encorat-khrono in the complex treatment of the patients with schizophrenia

40-41

Shihyslamova N., span . B., Lobodenko . G., Sadykova B.

The use of preparation encorat-khrono in the complex treatment of the patients with alcoholic delirium

42-43

NARCOLOGY

Daurenbayev . . .

Author's technique of research and forecasting of a condition of the man (on an example of definition of duration of remission and relapse of drug addictive condition)

44-45

Barmatin V. N., khetov R. B.

To a question on application of the basic biochemical parameters, used at judge-medical examination of poisonings by narcotic and psychotropic substances

45-48

razhanova . S., Seksenova Z. K., khetbekova . P., Syzdykbaeva S., Zhaksalykova . K., likov . . .

Features of clinic of alcoholism and abusing spirits drinks by the minors at the stages of rehabilitation

48-52

**Volume XIII
3
2007
Published 4 times
in a year**

<i>marova . N.</i>	
Social, demographic and clinical-psychopathological feature of the taken into account quota of HIV infected drug addicts	52-58
<i>Rossinsky Y. ., Rubtsova . ., Nuraliev B. Z.</i>	
Sublingual using of PAS of handicraft manufacture: nasvai	58-59

BOUNDARY PATHOLOGY

<i>Bultacheyev Z. Z.</i>	
The complex program of therapy of frustration of adaptation at the inhabitants of ecopathogenic territories of Priaral	60-67
<i>Nazloyan G. .</i>	
Loneliness and death in clinics (to a problem of norm and pathology in psychiatry)	67-76

BOUNDARY FRUSTRATION

<i>zhanova . .</i>	
Psychological-pedagogical features of illegal behavior of the girls - teenagers	77-79

PSYCHOLOGY OF HEALTH. VALEOLOGY.

<i>skvitin P. N., nisova . V.</i>	
Monitoring of a condition of psychological health of psychotherapists and psychologists and the task of akmeology	80-82
<i>skvitin P.N.</i>	
About study of typological personology of psychotherapists and medical psychologists	82-84

THE INFORMATION, REVIEWS

<i>Starostin V. V.</i>	
Spermatozoid principle in the works of Vysotsky	85-89

DEBATABLE TRIBUNE

<i>Volobayev V. .</i>	
Psychotherapy, as the factor of struggle with corruption	90-91
<i>Summary</i>	92-98

1-2

?

«
»,

10 2006 26 2007

.2008

« .ru»,
».

« Happy Hippo Show ».

1. // - .

2. /

3. :

« », 2006, 288 .

», 2005, 59 .

», 2005, 72 .

1	()	« ». : « ».	!- , (» ». -)
2	()	»	
3	-	, « »	- -
	-	, « »	, victory -
	()	,	, ,
	- ,	,	
	-	, ,	.
	-	(,) -	
	4		,
5		,	- , - . - ! ()
6		.	- ,

(1872-1971).

23 1890

III

: «

».

	- -
- (, « »);	
- , « (»);	20 10
- ()- ,	23 1890 III : « ».
- ,	
- ()	
1.	(),
2. ()	<hr/>
3. (- - -6-7 , - -5-6 ()-4 . - ,	: « , , , , , , , »

: -
 ()

 - [73, 143, 158, 200, 204].
 - [40, 119]
 . Kraft-Ebing,
, E. Kraepelin,, E. Bleuler [64,
 128, 163, 192, 193]
 ()
 . E. Kraepelin
 ()
),
 [21, 39, 42, 61, 112, 134].
 , -
 -
 , -
 -
 -
 , [67, 106, 157],
 [47], -
 , [93]. -
 . -
 , -
 -
 () [27, 43,
 [170] -
 « » 59, 126, 169, 207].
 [5, 6, 24, 52, 82, 89, 90, 95, 141, 205]
 [115]. Deister A., Moller H. J. -
 (1998), [188]. -
 « » -
 -
 (. [131]). Martin R. L., Cloninger C. R., -
 Guze S. B. [201] , 60% -
 -
 -
 25-
 50% [173, 185, 198] 13-) -
 54% [147, 159, 185, 214]. -
 -
 , -
 -
 -
 () 1969 .,
 K. Heinrick
 30
 [49, 75, «
 » [183, 223]. K. Heinrick -
 162, 187, 200],

70-
B. Guses, E. Robins [181] « [4, 35, 110, 131, 203].
», S. Fadda, C. Muller [175] «
« », :
T. McGlashan, W.T. Carpenter [202] – « ()
», , ,
. 1992 . ,
10 « [6].
» F2 - « , , «
» » , «
» - ,
[92]. DSM-IV (1994)
« », « »
« ».
« » [54, 103,
. . [64, 65] « » 131, 145, 149].
, . . [98]
, , -
. . [128] « -
» - -
. . Kraepelin (1913) . . (1914)), ,
, :
(. [96]). -
» « [113],
[53];
, [15];
[4, 7, 61, 110, 118, 131, 171, 176,
177, 179, 180, 217]. -
(-
) - ,
(- [135];
- [36, 86, 133];
- -
[132] - (. [98]), :
[209, 218, 224]. -
[87];
[47, 156, 191, 196, -
212, 220]. [36];
, [1; 77], « -
[173, 191, 196] [110]. » « [37, 38, 57];
« » -
[1, 3, 50, 51, 86, 88].
, ,
(« -
») ([85, 120, 140];

			: «	»	«	-
			»,			-
		[24, 156].		[71].		-
				«	»	-
				[9, 10, 122, 125, 199],		-
6				(-
		[37, 156, 174, 204, 213, 221].				-
		() [47,) [10, 51, 59],	[58, 125,	-
150, 156, 202, 204].			-	136, 208],		-
			-	[2, 26, 107],	[9, 23, 51, 59, 121, 154].	-
22	80%	[47, 85, 183, 189, 191, 202].		«	»	-
						-
					[8,	-
				19, 22, 46, 71, 93, 144, 153],		-
					[72, 84, 117, 125],	-
				(«		-
					[12, 13,	-
		» [163]),			20, 22, 58, 51, 93, 97, 136, 144].	-
						-
						-
		[28, 29, 30, 95, 105, 116, 129, 130, 132,				-
192].						-
						-
		[36],				-
		«	»			-
		[34, 100, 166]				-
					[45, 46, 69, 125, 127].	-
		[75].				-
						-
						-
						-
		[98].				-
						-
						-
		[194, 202],			[188].	-
						-
		[14, 44, 48, 203, 219].				-
						-
		[17, 18, 60, 98, 132].				-
						-
						-
		[31, 35, 44, 99, 155, 178, 187].				-
					[62, 63, 91, 151,	-
				187, 190, 216].		-
						-
					[20].	-
				[24]		-
						-
						-
					C. Mundt	-
				[206],	[111]	-

[62] - .). . . [88],
 (-
),
 « -
 », -
 . -
 . . [83] -
 -
 -
 [189, 211]. -
 , -
 -
 [94, -
 162, 184, 186, 225]. , -
 -
 (-
 [30, 81, 215]), -
 , -
 [85, 203, 204]. -
 , -
 , -
 [41, 148] . [35, 47, 56, 61, 85, 98, 145, 201, 203,
 204, 226]. -
 , -
 : , , -
 -
 (, « » -
), « » , -
 , [108, 182, 203,
 210]. . . [47] -
 [89, 139]. -
 , -
 -
 , Berrios G. E., Bulbena A. [161] -
 , -
 , -
 [50], -
 « » , -
 -
 , -
 , « -
 [152] [1, 11, 79, 80, . . . 135]. . . » . Johnson D.A.W.
 [186] -
 , -
 [86] , , -
 -
 [132], -
 , -
 (() -
 (()

16. . . . -
17. . . . , 1972, 13 . -
- , 1998. - 4. - . 109-114 //
18. . . . -
- - , 1994, 16 .
19. . . . : / - , 1965. - . 81-89 //
20. // (.2): . . . IV / -
- - , 1965. - 4. - . 405-408
21. - . : , 1969, 344 .
22. // : / - - : , 1976. -
- 5-7
23. . . . - , 1968. - .1. - . 213-216
- // : / - //
24. . . . / - , 1973. - . 67. - . 48-52
25. . . . „ „ „ „ //
- , 1992. - 10. - . 36-37
26. // , 1980. - . 80. - 12. - . 1827-1832
27. // , 29-30
- 2006 . - . : , 2006. - . 11-12
28. // , 1983. - . 83. - 8. - . 1189-1194
29. // , 1978. - . 78. - 12. - . 1830-1835
30. // [. . . .] // / . - . - : http://www.psychiatry.ru/library/lib/article.php4?booknumber=20&article_id=18
31. . . . -2- . - . : , 2001, 432 .
32. - . : , 1982, 192 .
33. // : /
- . : - , 1983. - . 57-65
34. // (. . . . ,) : / , 1991. - . 130. - . 6-29
35. « » // : „ , 25-26 1986 . / - . : .
- , 1986. - . 173-175
36. // (. . . . ,) : / - . : , 1991. - . 130. - . 50-60
37. // - . : - , 1986. - . 5-16
38. // / , 1989. - . 182-214

39. , 1954, 520 .
40. //
- , 29-30 2006 . - , 2006. - . 102-103
41. //
- , 1987. - . 87. - 4. - . 550-555
42. , 1949, 502 .
43. (-
-)// , 2003. - 1. - . 5-10
44. //
- () , 2002. - 3. - . 72-75
45. //
- / , 2006. - . 516-547
46.
- // , 1994. - 4. - . 38-45
47. (- -
-): , 1990, 242 .
48. () -
- //
- , 2005. - 2. - . 79-81
49. - « », 2004, 480 .
50. -
- // , 1960. - . 60. - 4. - . 469-473
51. :
- , 1961, 20 .
52. // (. 2): .
- . IV / - . , 1965. -
- . 4. - . 267-274
53. (-):
- - , 1968, 32 .
54. « »(-
- 10) // : 100-
- / , 1996. - . 211-214
55. //
- : , 7-8 1998 ./
- []// / , [1998] -
- <http://www.psychiatry.ru>
56. // -
- / -
- , 2000. - . 92-96
57.
- // (. 2): IV /
- , 1965. - . 4. - . 400-405
58.
- . - , 1957, 152 .
59. 2- , - , 1985,
- 216 .
60. ()
- // , 2003. - 4. - . 37-41
61. // / , , -
- . - , 1968. - . 242-289
62.
- // : /
- . - , 1989. - . 81-85
63.
- // , 1974. - . 74. - 8. - . 1210-1216
64. - 2- - , 1901, 1114 .

65. ,1954, 772 .
66. // : - -
- / +, 2004. - . 62-76
67. // : - -
- / +, 2004. - . 189-197
68. // : - -
- - - / +, 2004. - . 14-62
69. " "
- // , 2004. - 4. - . 32-37
70. - - - / //
- : - - - +, 2004. - . 88-109
71. // : - - -
- / +, 2004. - . 152-189
72. // , 1985. - . 85. - 8. - . 1212-1217
73. // : / - -
- : , 1976. - . 17-21
74. // - - -
- - , 1940. - . 1. - . 5-145
75. . - : ,
- 1977, 136 .
76. //
- , 1997. - . 45-47
77. :
- . - , 1990, 219 .
78. // , 1990. - . 90. - 7. - . 61-65
79. -
- // , 1986. - . 86. - 8. - . 1191-1196
80. (
-)// , 1987. - .
87. - 1. - . 77-82
81. - - - : -
- , 2006, 100 .
82. //
- , 1976. - . 76. - 12. - . 1843-1847
83. //
- / - : , 2001. - . 497-516
84. -
- //
- : , 25-26 1986 ./ - : .
- , 1986. - . 98-100
85. // :
- / - : - , 2006. - . 92-141
86. // , 1986. - . 86. - 5.
- . 719-725
87. //
- , 1969. - . 69. - 11. - . 1697-1702
88. -
- // , 1987. - . 87. - 1. - . 71-77
89. []//
- 2006. - . 8, 3. - : <http://www.consilium-medicum.com/media/psycho/>

90.				//	:	.	.	/	.
91.									
92.				(10-)			-
93.									
1963, 198									
94.									
95.									
96.									
97.									//
98.									
99.									
100.									
101.									
1967. - .67. - 1. - .87-92									
102.									
103.									
104.									
105.									
106.									
107.									/
108.									
109.									
110.									
111.									
112.									
113.									
114.									
3. - .109-113									
115.									
116.									/
1980, 12									
117.									
118.									
119.									

120. , 2002, 572 .
121. -
- // , 1983. - . 83. - 5. - . 716-720
122. (-)//
- , 1985. - . 85. - 8. - . 1217-1221
123. ? , 2005. - 3-4 (8). - . 16-17
- // ,
124. : . XII . ,
- // (, 14 2005 .)/ : « » , 2005. - .
12. - . 103-105
125. ,
- : - , 1995, 345 .
126. - : - , 1999, 403 .
127. //
- , 2004. - 4. - . 20-26
128. : . - 2- -
- ∴ , 1912, 654 .
129. (, , -
- ,) - : , 1986, 272 .
130. : . - ∴ , . :
- , 2002, 708 .
131. ,
- // , 1961. - . 61. - 2. - . 236-246
132. - ∴
- , 2003, 432 .
133. *Nosos et pathos schizopreniae* // :
- / - ∴ , 1972. - . 5-15
134. - : .
- ∴ - , 1958, 14 .
135. () //
- , 2001. - 3. - . 80-86
136. ,
- // :
- / - , 1991. - . 16-20
137. - , 2001, 43 .
138. : -
- - , 1975, 21 .
139. : //
- / - ∴ , 1997. - . 12-26
140. // . 2 . /
- ∴ , 1999. - . 1. - . 413-418
141. 70-90- // , 2004. - 11. - . 34-37
142. //
- : / - ∴
1967. - . 49. - . 25-31
143. //
- / - : , 1976. - . 34-36
144. // : /
- - , 1968. - . 1. - . 321-325
145. - ∴ , 1975, 136 .
146.
- // , 2002. - 3. - . 97-104
147. //
- ∴ -
- ∴ , 1988. - . 3. - . 554-555

148. // : . . . / -
 , 1989. - . 52-55
149. //
 : , 7-8 1998 . /
 [] // / . - . - : <http://www.psychiatry.ru>
 //
150. , 1999. - . 7. - . 3. - . 130-134
151. :
- ... , 1966, 20 .
152. //
153. : / - . , 1987. - . 247-253
154. // , 1999. - 4.
 - . 49-52
155. // , 1998. - 4. - .
 21-29
156. () // , 2002. - 4. - . 101-104
157. () : [-
] // / . - . , [1999]. - : <http://psychiatry.ru/dissert/shumskaya.html>
158. Addington D. E., Addington J. M. *Attempted suicide and depression in schizophrenia* // *Acta Psychiatr. Scand*, 1992. - Vol. 85. - P. 288-291
159. Barnes T. R. E., Curson D. A., Liddle P. F., Patel M. *The nature and prevalence of depression in chronic schizophrenic inpatients*. // *Brit. J. Psychiatry*, 1989. - Vol. 154. - P. 486-491
160. Becker R. E., Colliver J. A., Verhulst S. J. *Diagnosis of secondary depression in schizophrenia* // *J. Clin. Psychiatry*, 1985. - Vol. 46. - N. 11, sect.2. - P. 4-8
161. Berrios G. E., Bulbena A. *Postpsychotic depression: the fulbourn cohort* // *Acta Psychiatr. Scand*, 1987. - Vol. 76. - P. 89-93
162. Black D. W., Winokur G., Warrock G. *Suicide in schizophrenia: the Iowa record linkage study* // *J. Clin. Psychiatry*, 1985. - Vol. 46. - P. 14-17
163. Bleuler E. : « », 1920, 538 .
164. Bowers M., Astrachan B. *Depression in acute schizophrenic psychosis* // *Amer. J. Psychiatry*, 1967. - Vol. 123. - N.8. - P. 976-979
165. Burrows G. D., Norman T. R. //
 / , -
 2001. - . 223-232
166. Carpenter W. T., Heinrichs D. W., Alps L. D. *Treatment of negative symptoms* // *Schizophr. Bulletin*, 1985. - Vol. 11. - N. 3. - P. 440-452
167. Ciompi L. *The natural history of schizophrenia in the long run* // *Brit. J. Psychiatry*, 1980. - Vol. 136. - P. 413-420
168. Ciompi L. *Modellvorstellungen zum Zusammenwirken biologischer und psychosozialer Faktoren in der Schizophrenie* // *Fortschritte der Neurologie und Psychiatrie*, 1984. - Vol. 52. - S. 200-206
169. Ciompi L. ? // , 1999.
 - 3. - . 27-31
170. *Cross-national comparisons of the prevalences and correlates of mental disorders* // *Bull. WHO*, 2000. - Vol. 78. - N. 4. - P. 413-426
171. DeAlarcon R., Carney M. W. P. *Severe depressive mood changes following slow-release intramuscular fluphenazine injection* // *Brit. Med. J.*, 1969. - Vol. 3. - P. 564-567
172. De Figueiredo J. M. *Depression and demoralization: phenomenologic differences and research perspectives* // *Comp. Psychiatry*, 1993. - Vol. 34. - P. 308-311
173. Donlon P. T., Rada R. T., Arora K. K. *Depression and the reintegration phase of acute schizophrenia* // *Amer. J. Psychiatry*, 1976. - Vol. 133. - P. 1265-1268

174. Elk R., Dickman B. J., Teggin A. F. *Depression in schizophrenia: A study of prevalence and treatment* // *Brit. J. Psychiatry*, 1986. – Vol. 149. - N. 8. – P. 228–229
175. Fadda S., Muller C. *La depression postschizophrenique* // *Ann. Med. Psychol.*, 1975. – Vol. 146. - N.1. – P. 65-71
176. Falloon I., Watt D. C., Shepherd M. *A comparative controlled trial of pimozide and fluphenazine decanoate in the continuation therapy of schizophrenia* // *Psychol. Med.*, 1978. – Vol. 8. – P. 59-70
177. Floru L., Heinrich K., Wittek F. *The problem of postpsychotic schizophrenic depression and their pharmacological induction* // *Int. Pharmacopsychiatry*, 1975. – Vol. 10. – P. 230-239
178. Gabbard G. ., Kay J. *The Fate of Integrated Treatment: Whatever Happened to the Biopsychosocial Psychiatrist?* // *Amer. J. Psychiatry*, 2001. – Vol. 158. – P. 1956-1963
179. Galdi J., Reider R. O., Silber D., Bonato R. R. *Genetic factors in the response to neuroleptic in schizophrenia: a psychopharmacogenetic study* // *Psychol. Medicine*, 1981. – Vol. 11. – P. 713-728
180. Galdi J. *The causality of depression in schizophrenia* // *Brit. J. Psychiatry*, 1983. – Vol. 142. – P. 621-625
181. Guses B., Robins E. *Suicide and primary affective disorders* // *Brit. J. Psychiatry*, 1970. – Vol. 117. – P. 437-448
182. Harkavy-Friedman J. M., Restifo K., Malaspina D., Kaufmann C. A., Amador X. F., Yale S. A., Gorman J. M. *Suicidal behavior in schizophrenia: Characteristics of individuals who had and not attempted suicide* // *Amer. J. Psychiatry*, 2000. – Vol. 156. - N. 8. – . 1276-1278
183. Heinrich K. *Das postremissive erschöpfungs-syndromals multikonditionale depressive reaktionsform schizophrenener* // *Das depressive syndrom. Internat. Simposion Berlin 16-17 Februar 1968. – Munchen-Berlin-Wien*, 1969. – S. 453-456
184. Herz M. I., Melville C. *Relaps in schizophrenia.* // *Amer. J. Psychiatry*, 1980. – Vol. 137. – P. 801-805
185. Johnson D. A. W. *Studies of depressive symptoms in schizophrenia I. The prevalence of depression and its possible cause.* // *Brit. J. Psychiatry*, 1981. – Vol. 139. – P. 89-101
186. Johnson D. A. W. *The significance of depression in the prediction of relapse in chronic schizophrenia / Brit. J. Psychiatry*, 1988. – Vol. 152. – P. 320-323
187. Kaplan H. I., Sadock B. J. 2 – .: , 1998. – . 1, 672 .
188. Katsching H. *How useful is the concept of quality of life in psychiatry?* // *Psychological Medicine*, 1998. – Vol. 28. – P. 159-164
189. Kayton L., Beck J., Koh D. *Postpsychotic state, convalescent environment and therapeutic relationship in schizophrenic outcome* // *Amer. J. Psychiatry*, 1976. – Vol. 133. - N. 11. – P. 1269-1274
190. Klein D. N., Williamson P. *Premomid adjustment and affective symptomatology in schizophrenia* // *J. Nerv. Ment. Dis.*, 1981. – Vol. 169. - N.8. – P. 497-502
191. Knights A., Hirsch S. R. *Revealed depression and drud treatmen for schizophrenia* // *Arch. Gen. Psychiatry*, 1981. - Vol. 38. - N. 7. - P. 806-811
192. Kraeplin E. – .: , 2004, 493 .
193. Kraft-Ebing. 3- – .: , 1882. – . 2, 272 .
194. Kramer M. S., Vogel W. H., Johnson C. D., Dewey D. A., Sheves P., Cavicchia S., Litle P., Schmidt R., Kimes I. *Antidepressants in “depressed” schizophrenic inpatients: A controlled trial* // *Arch. Gen. Psychiat.*, 1989. - Vol. 46. - . 922-928
195. Lambert P. A. *Depression et neuroleptiques action prolongie* // *Acta. Psychiatr.*, 1987. – N. 4. – P. 100-108
196. Leff J., Tress K., Edwards B. *The clinical course of depressive symptoms in schizophrenia* // *Schizophr. Research.*, 1988. – N. 1. – P. 25-30
197. Mackinnon B. L. *Postpsychotic depression and the need for personal significance* // *Amer. J. Psychiatry*, 1977. – Vol. 134. - N. 4. – P. 427-429
198. Mandel M. R., Severe J. B., Schooler N. R. *Development and prediction of postpsychotic depression in neuroleptic treated schizophrenics* // *Arch. Gen. Psychiatry*, 1982. - Vol. 39. - P. 197-203
199. Mantonakis J. E., Jemos J. J., Christodoulou G. N. *Short-term social prognosis of schizophrenia* // *Acta psychiat. scand.*, 1982. – Vol. 66. – P. 306-310
200. Marneros A., Prentkowski B. *Suizidalit t bei ersthsptalisierten schizophrenen Patienten* // *Psychiatr. Neurol. med. Psychol.*, 1985. – 37. - 4. – 205-214
201. Martin R. L., Cloninger C. R., Guze S. B., Clayton P. B. *Frequency and differential diagnosis of depressive syndromes in schizophrenia.* // *J. Clin. Psychiatry*, 1985. – Vol. 46. - N. 11. – P. 9-13
202. McGlashan T., Carpenter W. T. *Postpsychotic depression in schizophrenia* // *Arch. Gen. Psychiatry*, 1976. - Vol. 33. - P. 231-239
203. Meltzer H. Y., Fatemi H. : // - , 1996. – 2. – . 86-91

204. Mulholland C., Cooper S. *The symptom of depression in schizophrenia and its management* // *Advances in Psychiatric Treatment.*, 2000. – Vol. 6. – P. 169–177
205. Muller P. *Depressive Syndrome in Verlaufschizophrener Psychosen. Klinische Studi zur Psychopathologic and Pharmakogenese.* – Stuttgart: F. Enke Verlag, 1981, 81 s.
206. Mundt C. *Die psychopathologie des langzeitverlaufs schizophrener erkrankungen* // *Nervenarzt.*, 1981. – Bd. 52. – N. 9. – S. 493-505
207. Neufeldt A. H. // . . . , 2002. – 3. – P. 5-13
208. Nyman G. E., Nyman A. K., Nylander B. I. *Non-regressive schizophrenia. I. A comparative study of clinical picture, social prognosis and heredity* // *Acta psychiat. scand.*, 1978. – Vol. 57. – P. 165-192
209. Rifkin A. *Akinesia* // *Arch. Gen. Psychiatry*, 1975. – Vol. 32. – P. 672-674
210. Rossau C. D., Mortensen P. B. *Risk factors for suicide in patients with schizophrenia: nested case-control study* // *Brit. J. Psychiatry*, 1997. – Vol. 171. – P. 355
211. Roth S. *The seemingly ubiquitous depression following acute shizophrenic episodes, a neglected area of clinical discussion* // *Amer. J. Psychiatry*, 1970. – Vol. 127. – N.1. – P. 51-58
212. Roy A. *Do neuroleptics cause depression?* // *Biol. Psychiatry*, 1984. – Vol. 19. – P. 777-781
213. Roy A., Thompson R., Kennedy S. *Depression in chronic schizophrenia* // *Brit. J. Psychiatry*, 1983. – Vol. 142. – P. 465–470
214. Sands J. R., Harrow M. *Depression during the Longitudinal course of Schizophrenia* // *Schizophr. Bulletin*, 1999. – Vol. 25. – N. 1. – P. 157-171
215. Serretti A., Cavallini M. C., Macciardi F., Namia C., Franchini L., Souery D., Lipp O., Bauwens F., Smeraldi E., Mendiewicz J. *Social adjustment and self-esteem in remitted patients with mood disorders* // *European Psychiatry*, 1999. – Vol. 14. – P. 137-142
216. Shader R. I. // / . . . : . . . – .: . , 1998. – P. 395-425
217. Singh M. M. *Dysphoric response to neuroleptic treatment of schizophrenia and its prognostic significance* // *Dis. Nerv. Syst.*, 1976. – Vol. 37. – P. 191-196
218. Siris S. G. *Akinesia and postpsychotic depression: a difficult differential diagnosis* // *J. Clin. Psychiatry*, 1987. – Vol. 48. – N. 6. – P. 240-243
219. Siris S. G. *Antidepressants in “depressed” schizophrenics* // *Depression in Schizophrenics* / eds. R. Williams, Dalby J. T. – New York: Plenum Publishing Corporation, 1989
220. Siris S. G., Strahan A., Mandeli J., Cooper T. B., Casey E. *Fluphenazine decanoate dose and severity of depression in patients with post-psychotic depression* // *Schizophr. Research*, 1988. – N. 1. – P. 31-35
221. Steinberg A. R., Green R., Durrel J. *Depression occurring during the course of recovery from schizophrenic symptoms* // *Amer. J. Psychiatry*, 1967. – Vol. 124. – P. 153-156
222. Strian F., Heger R., Klicpera C. *The course of depression for different types of schizophrenia* // *Psychiat. Clin.*, 1981. – Vol. 14. – P. 205-214
223. T lle R. : . . . – .: . , 2002, 496 .
224. Van Putten T., May P. R. A. *“Akinetic depression” in schizophrenia* // *Arch. Gen. Psychiat.*, 1978. – Vol. 35. – P. 1101-1107
225. Verdoux H. *Depression et schizophrenic* // *J. Information Psychiatry*, 1995. – N. 10. – P. 1026-1033
226. Weiss K. Y., Valdiserri E. V., Dubin W. R. *Understanding depression in schizophrenia* // *Hosp. Commun. Psychiatry*, 1989. – Vol. 40. – N. 8. – P. 849-851
227. Zubin J., Spring B. *Vulnerability – a new view of schizophrenia* // *J. Abnorm. Psychol.*, 1977. – Vol. 86. – P. 103-126

()

..

,
-
(),
,
2006 .

(), , (, .),

- -

. -

, - .(. . , . .).

, -

, « » -

() - . . .

, - ,

, - ,

. - ,

« » - ,

, -

, « » - ,

», « » - ,

», « » - ,

. « -

»(. . -

) -

(, « -

»), -

, -

, -

, - « -

, -

, - ».

« » -

, -

- -

, -

, -

, -

, -

() -

« » - ,

: -

() - (-

). -

25% 39%

, - , (-

»(. .). - , (. .).

, -

(. .). -

, -

, -

-

, -

:

()

1973

1984

D. Rosenhan.

8

(5 3) 12

11 12

« ».

3 7,5

1.

« »



-

... , ... , ... , ...

37 -

18 - 52 , : - 19 ;
- 18 . 5 - 20 . 15 -
22

-

1, 6, , ,

0,5% 4 3

600 - 900 1 2 .

(

1 - 2 ,

12 - 24 .

(- 450).

(

).



- ; , -
- ; , -
- . - -
- : - -

1. : . - . , 1988
2. . . . - . 1 - 2. - . , 1999
3. . . . , 2005 //

1. : /
2. , 2005, 213 .
3. , 2001. - .6. - 215-217 // 2007 .

()

...

()

?

10 - 12% (90%)

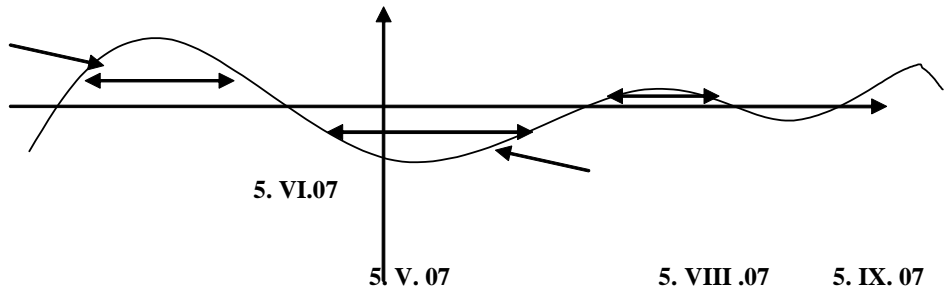
10-12%, ?

2 14

1.

1.

1



2.

« -

» « ».

3.

, - : - « »,

1.

1

1	()	1	
2		2	
3		3	
4		4	

1. « »

2. « »

« » -

» « -

» « -

4. « » -

» -

« » (-

« ») -

» -

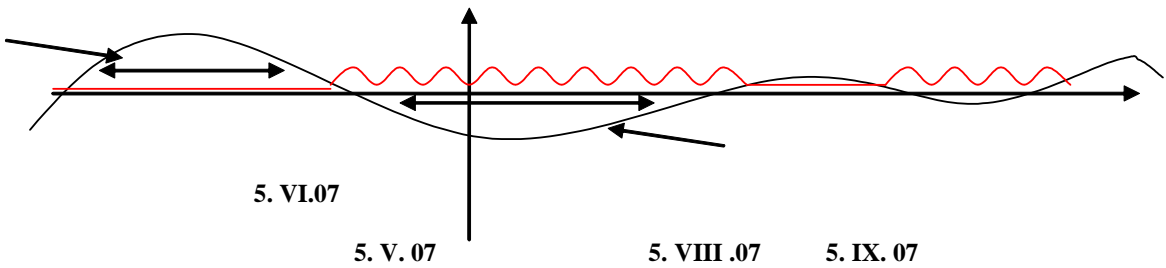
» -

» -

3. « » -

2.

2



-

-

-

-

-

-

-

-

-

-

100%

-

-

-

-

-

-

-

-

-

-

-

-

-

» . 15 - 20%

-

1. 100%

2.

3.

20

(

).

2 7

1:3, . .

12 - 14

[5, 7].

1 - 1,5

(3-

4).

100 - 200

50-100

»

(

)

[1, 2].

()

[5].

« ».

() .

(2-4) .

10-

()

[1, 3, 4].

(13-14) ,

() .

(3-5) .

5-6 »

« »

[6].

«

»

[6].

1. // . -
2. // . -
3. // . -
4. , 1998, 408 .
5. « . - »
6. , 1995, 559 .
7. , 1988 . -
8. : « » , 2003, 480 .

, -
 -

 - , -
 , , -
 , , -
 [- / ,
 « , , -
 -
 » , 2003].
 -
 , .
 , , -
 - -
 [-
 2006-
 2010]. (,
),
 , -
 , ,
 , -
 - -
 -
 [. , 2006].

		(30%	5,6%		-			
	5,36:1).							
				1	-			
		(40%	33,3%		-			
	1,2:1 20%	16,7%						
	1,2:1,)						
			(50%		37			
40%	1,25:1).							
				2	-			
(1,2:1 1,2:1)		2.1				
	(1,25:1).							
-)	(
				2.2				
-								
	33,3%,	1,2:1 20%	2 (40%					
11,1%,	1,8:1).							
	(55,6%	40%						
1,39:1).	, 3 4-							
				2.3				
		(
)						
					1 2			
					2			
1.			«					
» /								

(26-28 2002,)// .
 - , 2003. - 3, 1. - .73-74

2. 2006-2010 /
 , 1216 15 2006 .

3. // . -
 « / ».- ., 2006. - . 2-9

:

... , ... , , ..

- (« »). -

, - (), -

, - /

-

, : «...»

, « »

...».

12.

-

« »

1.

, -

, -

1.1.

, - 50%;

-25%; -25%.

, « » -

, -

, ... (

).

1.3.

« ».

():

(.., 2004, .., 2007, .., 2007)

, -

:

« »

35-40-

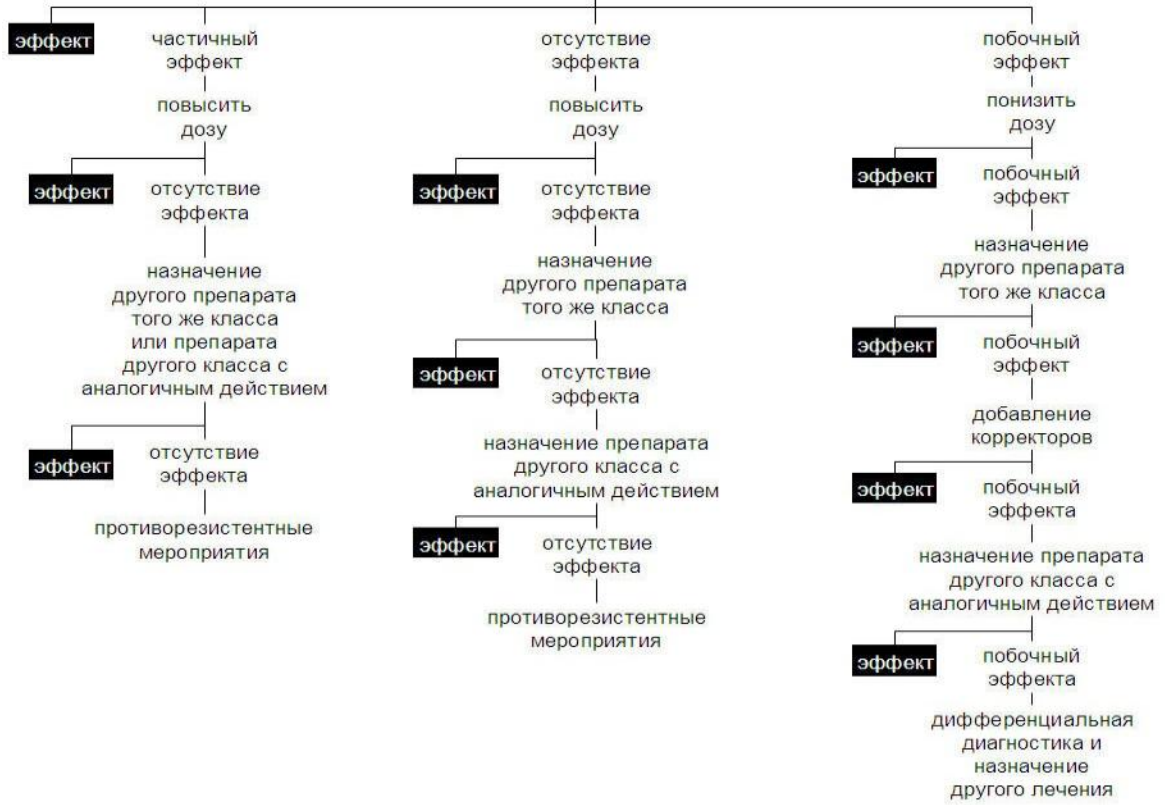
« » « ».

« »

()

(1).

психотропный препарат



« » , -

« » , -

« » , -

() -

12,5 50 (-

« » , -

100 . -

« » . -

) 20 -

, 1,5

« ».

:«

?», « ?», « ?»,

)5-7 -

) 25 - 30 -

) 15 -

(, , .)

)45 -

« »,

1

1.	
1	- - - -
2	- - - -
3	- - - -
4	- - - -

(to be, or not to be),

« !»—

(The fair Ophelia! Nymph,
in thy orisons be all my sins remember'd).

?

« »

:« ».

()

« ».

« ».

), (: « »

(,2005). « »

:« ».

? ()

20- - « »

() « »

- « »

« »

!»

:« !» «

?». » « » «

» - :«

« » - ...» -

.« -

...

(, ,)

» (, ...).

- « » « »

« » ?

« »

« »

1.

(),

(- mutter!?)

« »

« ».

?»(, ...).

/

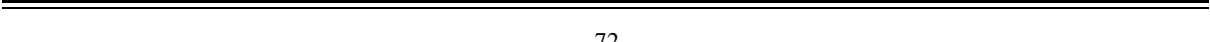
1966
(Lorenz).

1

()



, « » - , « » . , -
 , -
 , , , ? , , .
 , , , , (-
 , « ») , ,
 , - , -
 : « - -
 , , , - -
 , : (. , .).
 , — -
 , » . , / -
 , , , / ,
 , . 1920 . , -
 , 20- , -
 , « » . -
 - - -
 . , , , -
 , , , -
 , / , -
 , - , -
 (: -
 , .84). « , ; -
 , - , , , -
 , : , , -
 — « (, -
 »), - , -
 » - . / -
 , , , -
 , , , -
 ; « » , -
 , , , -
 , « » . ,
 20 , , -
 , - , , -
 , « - , -
 » . , -
 , « » . -
 , , , -
 , , , -



« »

finis

()

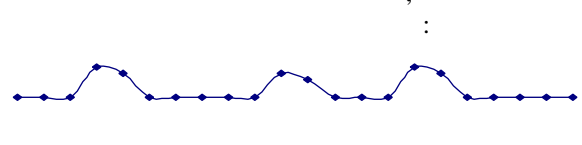
()

()

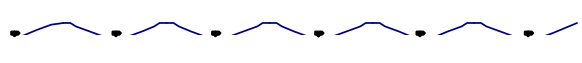
2



()



« »



()

« »

()

()

, - « ». , -
 . Trieb , - -
 (), , - « » -
 , , - .
 :
 1. . . .
 2. : // ,
 1994. - 5. - . 239-256
 3.
 4. 3. . - ., 1992
 5. // , 1994. - 5. - . 207-238
 6. . - ., « », 1985

. . .
 , , . - , -
 60- 2000 . . - , -
 : « » (. , -
 1969); « »(1981), « - , -
 , . . »(. . - . .
 , 1982); « -
 »(. . , 1999) . -
 , . . -
 , , -
 (1). - (5).
 - , -
 (. . , . . -
 (2), . . (3), . . (4) , -
 .) , , 12- , -
 , , -
 , , « -
 » , -
 , , -
 -155/4 (. -
) , 16- -
 « » , -
 . -
 , -
 « -155/4: -
 ?»(96 -
). -
 , . . -
 :«

)

,

« »,

(

1. // , 2002.

- . 291-296

2. . - ., 1982. - . 15-26

3. . - ., 1992. - . 20-26

4. . - ., 1992

5. : « », 2005

6. . - ., 1975

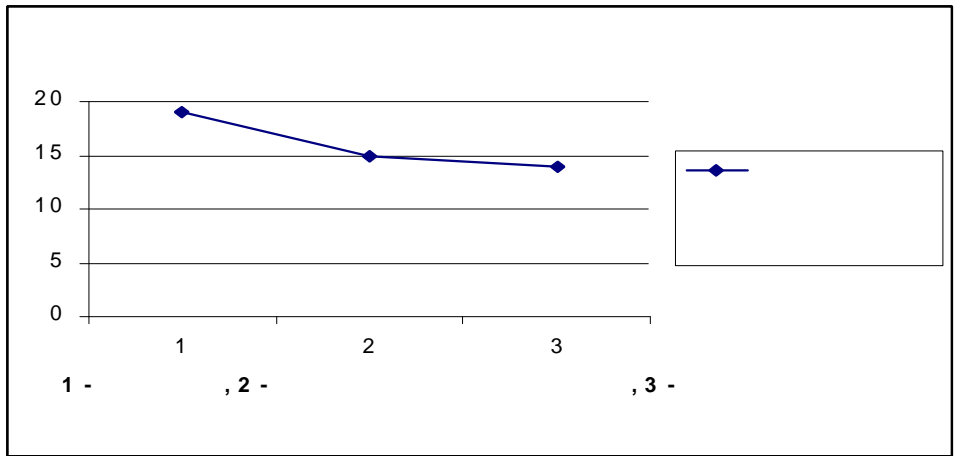
7. . - ., 1985

8. . - ., 1988

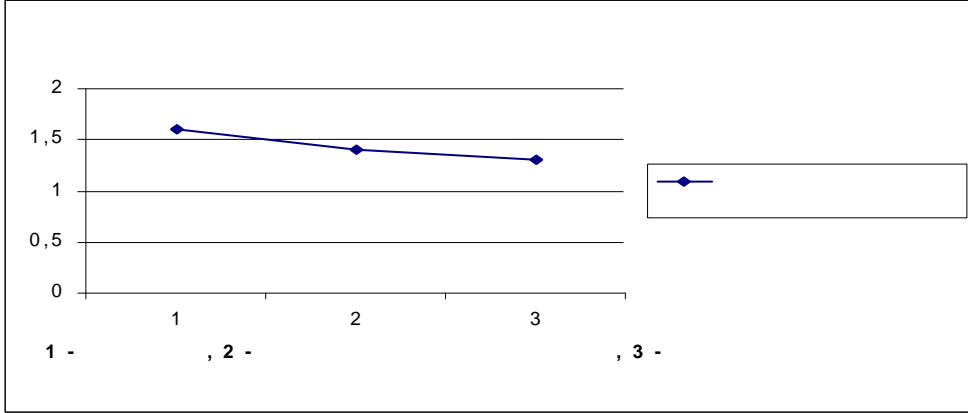
9. . - .

1992

3. ()
 4. ()
 » «
 » 1999 2005 :
 101 , 29 - 66%,
 , - (-24%
), 30 - (-10%.
 4) 42 - :47% -
 4 ,47% - 6%
 1. ()
 - 62%, - 26%
 2. 12% -
 . 1
 . 1



: - , 4% -
 (75%), (21%) P = 0,05.
 (5%). 2
 50% -
 ,43% -
 - 3,5%
 64% 36%
 52%
 ,45% -
 , 3%
 63% -
 ,33% -
 ,4% -
 74%
 , 24% -



, - « ».

-

-

· · ,

-

,

-

-

-

· ·

-

,

,

,

,

[1, 2, 5],

-

·

,

,

-

,

·

,

-

,

,

,

».

«

,

,

-

,

,

,

,

-

. . .

, . - , , , - , , , - , , , - ! , : -

1. «

, » - , , , - , , , - ? ?

- , , - , , , - ! ? - , , , -

. : «... - « - », - . » . , -

- « ». , , - : « « », . !». :

, , « ». , , , - « !» - . ? ?

. « ». , , , - ! : -

- , , - « !» , , , -

: , - , , , - , , , - ! « » -

, ! « » - , , , - « » , , , -

: « !
, , ?!
(« »)

2.

, , - ,
, , , -
, , , -
, ! : ? , -
, , , , -
, - - , -
, , , :
, - -
, « - ,
, ».
, « - ,
, ».
:
, ,
, ,
, ,
, « »?
, , , , « -
, , , , -
, ? , ? ».
, « » , « ?
, , « , »
, . ? , ,
: « , ,
, ! » ? , !
« - ,
, ,
, « - - , , -
, »- -
, , (,
, ,) :
: « - ,
».
, , , :
, « - ,
»

« - » (« - »).

? « »!

« - »

3.

« - » : «

».

?

(),



,
 . . .
 , ,
 , .
 . . . , - «
 , -
 ».
 -
 , -
 , , -
 , , -
 , , -
 , -
 , -
 : , -
 , , -
 , -
 , -
 : - 50-55%,
 - 20-25%,
 - 15-20%,
 - 10-15%.
 ,
 (70-80%).
 ,
 :
 « ».
 :
 , , -
 , , -
 , , -
 , , -
 , , -
 , , -
 , , -
 , , -
 :
 , , -
 , , -





« »

...

, -
-
-

:

, , .

• •

...

,

, , -

« »

: - ()

...

: -

, - , , ,

:

()

...

« — »: , , , -

-

:

, .



... , ... , ... , ...

-
-
-
52
.

: , - , .

-

... , ... , ... , ...

37

, : , - , .

()

...

, .
-
-
.

- 1.
- 2.
- 3.

: , , -
.
.



... , ... , ... ,
... , ... , ...

: , , , .

, -
-

..

« , - -
- » .. - -

/). (-

- , , , ; -
: , , , ; -
, - .

:

.. , ... , ...

, ; ; , - -

..

, , .. - -

, - -

.



SUMMARY

THE «SUBJECT» OF THE PSYCHOTHERAPY FROM THE POINT OF VIEW OF DIANALYSIS

V. Y. Chaplygina

Development of psychotherapy as a separate science is complicated in general and due to the difficulty of determining psychotherapy as a science. In this article the attempt to determine the subject area of psychotherapy using such instruments of dianalysis as modern integrative modality of psychotherapy has been made.

Key words: psychotherapy as a science, scientific subject of psychotherapy, dianalysis.

PERSONAL BRAND. ARCHETYPES OF SUCCESSFULNESS.

I. . Cheglova

Clause is devoted to a new sight on a problem of achievement of success in a trade and life. By one of the important means for this purpose acts brand of the expert. As a matter of fact, brand represents itself as powerful external stimulus starting a complex chain of conditional reflectory reactions, influencing more often at a not realized level. Such stimulus are capable to form resource condition and basic task of «branders» is in time to realize and adequately use arising opportunities. The essence and structure of personal brand forming are opened.

POST-SCHIZOPHRENIC DEPRESSIONS: CLINICAL AND SOCIAL ASPECTS (REVIEW)

V. M. Ashirbekov

This article reflects modern level of knowledge of post-schizophrenic depressions: be described history of distinguish of this disorder, formation of views for etiopathogenesis, clinical characteristics, discusses problems of clinical and social prognosis.

Key words: post-schizophrenic depressions, post-psychotic, social adaptation, quality of life.

ABOUT MENTAL NORM AND PATHOLOGY (clinical lecture)

G. . rasilnikov

There are esteemed the complexities of the theoretical and practical approaches to concept of the mental norm in clinical practice. In biomedical model there are analyzed the feasibilities of general medical yardsticks of dichotomy «the norm - pathology»: statistical, normative, personal, adaptive-ecological, and historical. From stands of modern paradigm biopsychosocial unity of the person analyzes specificity of yardsticks of the mental norm depending on social and ethno-cultural conditions.

Key words: psychical norm, psychical pathology.

THE USE OF THE PREPARATION ENCORAT-KHRONO IN THE COMPLEX TREATMENT OF PATIENTS WITH SCHIZOPHRENIA

N. K. Shihyislamova, T. B. Ospan, A. G. Lobodenko, B. K. Sadykova

In this work there are the results of the study of the application of the preparation encorat-khrono in the combined therapy of the patients with schizophrenia, there were mania and depressive symptoms in their illness,

and also of the patients with schizophrenia with psychotic symptoms on the basis of hypomania and the conditions of psychomotor excitement. 52 patients were investigated. The doctors noticed very good endurance of encorat-khrono, its high effectiveness, and also its potential effect on the simultaneously given psychotropic preparations.

Key words: schizophrenia, encorat-khrono, combined therapy.

THE USE OF ENCORAT-KHRONO IN THE COMPLEX TREATMENT OF ALCOHOLIC DELIRIUM

N. K. Shihyslamova, T. B. Ospan, A. G. Lobodenko, B. K. Sadykova

The main content of the suggested work is included in the investigation of the appliance of encorat-khrono in the therapy of alcoholic delirium. The dynamics of the reduction of psychopathological frustrations was studied in 37 cases of the patients. High effect of encorat-khrono was marked in reduction of psychological excitement, in normalization of dream, in stabilization of emotional basis, in amplification of tranquillizers' effect.

Key-words: alcoholic delirium, encorat-khrono, tranquillizers.

AUTHOR'S TECHNIQUE OF RESEARCH AND FORECASTING OF A CONDITION OF THE MAN (ON AN EXAMPLE OF DEFINITION OF DURATION OF REMISSION AND RELAPSE OF DRUG ADDICTIVE CONDITION)

. . Daurenbayev

The author's method of research and forecasting of a condition of the man on an example of definition of duration of remission and subsequent relapse of drug addictive condition is exact in time.

The given method allows with the help of a subjective technique to investigate a temporary biorhythm of drug addictive condition, that allows objectively in time to predict its activity as duration of remission and relapse irrespective of subsequent rate of treatment and rehabilitation.

Explains that the reasons of different duration of remission is not depended on treatment at the different patients and one patient at repeated treatment.

The method is based on the following rules:

1. Drug addictive condition, having generated during development of the individual, is constantly present at a different degree of activity at a subconscious level of mentality.
2. The periodic activity in the kind of remission and relapse is primary incorporated and is determined by a temporary biorhythm of drug addictive condition.
3. The temporary biorhythm of the given condition is the purpose of research of the author's method allowing on the basis of carried out diagnostics to predict in time the duration of remission and relapse.

FEATURES OF CLINIC OF ALCOHOLISM AND ABUSING SPIRITS DRINKS BY THE MINORS AT THE STAGES OF REHABILITATION

. S. razhanova, Z. K. Seksenova, . P. khmetbekova,
S. . Syzdykbaeva, . K. Zhaksalykova, . . likov

In present clause the clinical features of development of early alcoholic dependence in children's and teen's age are resulted.

Key words: children, dependence, alcoholism, clinic.

SOCIAL, DEMOGRAPHIC AND CLINICAL-PSYCHOPATHOLOGICAL FEATURE OF THE TAKEN INTO ACCOUNT QUOTA OF HIV INFECTED DRUG ADDICTS

marova .N.

In the clause «Social, demographic and clinical-psychopathological feature of the taken into account quota of HIV infected drug addicts» by . N. marova are resulted basic social - demographic and clinical-psychopathological features of a quota of HIV-infected drug addict patients in comparison with a similar quota of drug addicts without accompanying by comorbid pathology (HIV-status). These items of information can be taken into account in the appropriate programs of preventive maintenance of distribution of HIV/Aids among the consumers of injective drugs, in the programs of medical-social rehabilitation of HIV infected drug addicts, in the programs of antirecedive and supporting therapy.

Key words: the social status, gender, age, professional features; the family status, clinical-psychopathological syndromes.

SUBLINGUAL USE OF PAS OF HANDICRAFT MANUFACTURE: NASVAI

Y. . Rossinsky, . . Rubtsova, B. Z. Nuraliev

In the given clause the authors result the information according to the attitude to Nasvai - psychoactive substance for sublingual reception containing in its structure tobacco. According to the given data nasvai, is consider to be as ethno-historical cultural product; chemical substation; a product of youth subculture.

THE COMPLEX PROGRAM OF THERAPY OF FRUSTRATION OF ADAPTATION AT THE INHABITANTS OF ECOPATHOGENIC TERRITORIES OF PRIARAL

Z. Z. Bultacheyev

The correctly accepted decision on a choice of means of therapy results not only in positive result during treatment. Additional results in this case are rational use of time of the doctor, medicines, time of stay of the patient in stationary etc.

All listed parameters in aggregate reflect quality of activity medical - preventive establishment as a whole, and for the patient the improvement of a condition of health is a road to high-grade life.

SPERMATOZOID PRINCIPLE IN THE WORKS OF VYSOTSKY

V. V. Starostin

The article had been written 4 years ago, during the education by Mi hail E. Litvak. Since that time I am not neurotic any more, so I couldn't write using such style. I really don't know yet, is it good or bad.

Keywords: psychotherapy, self-realization, neurotic, self-made, stress, happiness, parents programs, psychological defenses, Vysotsky, Litvak, Frankl, Maslow, Horney, Berne.

3.08.2007 . 60 90 1/8.
Times New Roman. . . . 8,75. . . . 14.
500 . RISO.
« - »
- »

140001, , . , . , 200, . (7182) 57-29-39